

# JetStor<sup>®</sup>

Storage. Solutions. Support.

SAS / SATA2

4U

24 BAY

## JetStor SAS 624iS Series

HIGH PERFORMANCE RAID SYSTEMS

**1,600  
MB/S!**



**JETSTOR SAS 624iS**



**JETSTOR SAS 624iSD**

The JetStor SAS 624iS Series of RAID systems deliver 1,600 MB/second through 1Gb/sec Ethernet host connections to enable the most demanding applications. Outstanding throughput coupled with fast random access eliminates bottlenecks in your most demanding applications, diminishing response times and increasing productivity. The JetStor SAS 624iS RAID systems accelerate databases, file servers, production applications, imaging, and any application demanding the instantaneous delivery of records, small and large files.

### HIGHLY AVAILABLE DESIGN

JetStor SAS 624iS RAID systems feature fail-safe engineering for non-stop operations. A fully cableless design improves reliability. Dual hot-swappable power supplies with integrated turbo-cooling and separate power connections, and dual hot-swappable controllers provide system tolerance of any component failure. SNMP or SMTP email notifications of all system events enables proactive maintenance.

### NON-STOP ADS AVAILABILITY

Almost all RAID levels are supported for precise configuration to your application's performance and protection requirements. Multiple drives may be designated as hot-spares allowing the system to transparently move data to a spare should an error be detected. Drives are hot-swappable, with automatic rebuilding of data on the new drive. Capacity can be increased and drives replaced while data remains on-line. Each system offers high-capacity expansion to multiple JBOD chassis with total storage measured in terabytes. For the greatest protection, RAID 6 with Advanced Data Sentry technology allows for continuous operations even with two simultaneous drive failures. Considering that RAID 6 ADS provides 1,000 times greater data protection than RAID 5, why trust your data to any other technology?

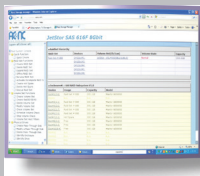
### FEATURES

- Up to 1,600 MB/sec performance through four 1Gb/sec Ethernet host connections to support your most demanding applications.
- RAID Manager browser based GUI management and monitoring software allows you to remotely configure and manage all JetStor systems with e-mail event notification.
- Supports all Operating Systems, both single and clustered.
- Field-replaceable major components allow for maximum convenience, uptime and configuration flexibility.
- Free telephone and email support provided for the life of the system.

### WARRANTY

- Three to five years on disk drives, three years on all other components.
- Optional advanced replacement program ships drive replacements within 24 hours. Optional on-site service also available.

**vmware<sup>®</sup>**  
READY



### RAID MANAGER

Proactively manage, configure and monitor all JetStor RAID systems from any browser.

[www.raid.com](http://www.raid.com)  
[sales@acnc.com](mailto:sales@acnc.com)  
**800.213.2667**



# JetStor®

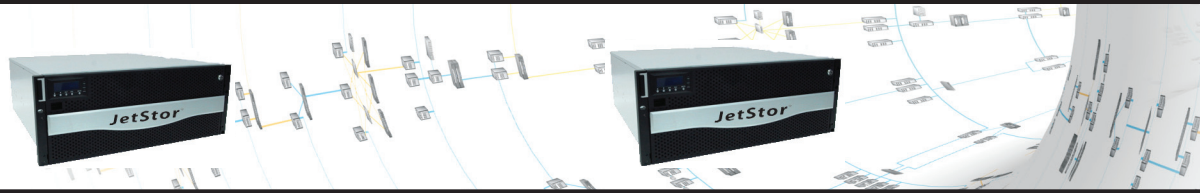
Storage. Solutions. Support.

## SPECIFICATIONS

# JetStor SAS 624iS Series

HIGH PERFORMANCE RAID SYSTEMS

**1,600  
MB/S!**



Model	JetStor SAS 624iS	JetStor SAS 624iSD
1Gb/s Ethernet iSCSI Host Interfaces	Four	Four
Disk Interface	3Gb/s SAS and 3Gb/s SATA2	
3Gb/s SAS Expansion Ports	One	Two
Drives (unit / expansion)	24, 3.5"/Up to 72	24, 3.5"/Up to 72
Processor type	Intel Xscale 64-bit RISC Processor	
Cache memory	2GB(default)-4GB(optional)/DDR2-800 ECC REG SDRAM	
Battery backup	Optional	Optional
Management / Monitor port support	Yes	Yes
SMTP manager and SNMP agent	Yes	Yes
<b>Enclosure</b>		
Tray lock	Yes	Yes
Disk status indicators	Access / Fail LED	Access / Fail LED
Single Backplane	SAS / SATA2 Cableless	
PS/Fan modules	Three 500W w/PFC	Three 500W w/PFC
Turbo Fans	Two	Two
Power 100V-240V	7A - 4A	7A - 4A
<b>Environmental</b>		
Relative Humidity	5% - 95% Non-condensing	
Operating Temperature	32°F - 104°F (0°C ~ 40°C)	
Physical Dimensions (W x D x H)	17"x19"x10" 442mm x 500mm x 176mm	
Weight (Without drives)	90 lbs (41 Kg)	
<b>Compatibility</b>		
Operating Systems	Windows, Linux, Solaris, Mac, VMWare, Hyper-V, Citrix and others to be announced	
SAS Drives	3.5": 300GB, 450GB, 600GB, 1TB, 2TB and 3TB	
SATA Drives	3.5": 1TB, 2TB and 3TB	
	* 3TB drives will require 6G MUX adapters	

## RAID FEATURES

- RAID Levels 0, 1,10(1E), 3, 5, 6, 30, 50, 60, JBOD
- Up to 128 Array groups
- Up to 128 LUNs
- Global & dedicated hot spares
- Simultaneous online expansion and RAID migration
- Drive roaming
- Online rebuild
- Variable stripe size
- E-mail notification
- Online capacity expansion
- Online volume set expansion
- RAID level/stripe size migration
- Online array roaming
- Online consistency check
- Instant availability and background initialization
- S.M.A.R.T. support
- MAID 2.0
- Bad block auto-remapping

## MANUFACTURER



[www.raid.com](http://www.raid.com)  
[sales@acnc.com](mailto:sales@acnc.com)  
 800.213.2667

### Advanced Computer & Network Corporation

5001 Baum Boulevard, Suite 680  
 Pittsburgh, PA 15213  
 Phone: 412.683.9010  
 Fax: 412.683.9070  
 Support: 888.686.2262  
 Europe: +44 (0)1628 891616  
 GSA Schedule: GS-35F-0694J  
 CMAS: 3-00-70-1230A

## SYSTEM FEATURES

- Menu driven front LCD display
- Innovative modular architecture
- Redundant flash image for high availability
- Multiple array enclosures per host connection
- Volume sets greater than 2TB (64-bit LBA support)
- Disk drives greater than 2TB
- Supports Windows 4KB/sector, up to 16TB per volume set
- Disk scrubbing / array verification scheduling for automatic repair of all RAID sets
- Records logins in the event log with IP address and service (http, telnet and serial)
- Supports intelligent power management to save energy and extend service life
- NTP protocol RAID controller clock synchronization
- Background initialization for instant availability
- Supports S.M.A.R.T, NCQ and OOB staggered spin-up capable drives
- Local audible event notification alarm
- Real time clock support