

# JetStor®

Storage. Solutions. Support.

SAS / SATA

4U

60 BAY

## JetStor SAS 660iS Series

HIGH PERFORMANCE RAID SYSTEMS

**1,600  
MB/S!**



**JETSTOR SAS 660iS**



**JETSTOR SAS 660iSD**

The JetStor SAS 660iS Series of RAID systems deliver 1,600 MB/second through 1Gb/sec Ethernet host connections to enable the most demanding applications. Outstanding throughput coupled with fast random access eliminates bottlenecks in your most demanding applications, diminishing response times and increasing productivity. The JetStor SAS 660iS RAID systems accelerate databases, file servers, production applications, imaging, and any application demanding the instantaneous delivery of records, small and large files.

### HIGHLY AVAILABLE DESIGN

JetStor SAS 660iS RAID systems feature fail-safe engineering for non-stop operations. A fully cableless design improves reliability. Dual hot-swappable power supplies with integrated turbo-cooling and separate power connections, and single or dual hot-swappable controllers provide system tolerance of any component failure. SNMP or SMTP email notifications of all system events enables proactive maintenance.

### NON-STOP ADS AVAILABILITY

Almost all RAID levels are supported for precise configuration to your application's performance and protection requirements. Multiple drives may be designated as hot-spares allowing the system to transparently move data to a spare should an error be detected. Drives are hot-swappable, with automatic rebuilding of data on the new drive. Capacity can be increased and drives replaced while data remains on-line. JetStor SAS 660iS offers high-capacity expansion to one JBOD chassis with total storage measured in terabytes. For the greatest protection, RAID 6 with Advanced Data Sentry technology allows for continuous operations even with two simultaneous drive failures. Considering that RAID 6 ADS provides 1,000 times greater data protection than RAID 5, why trust your data to any other technology?

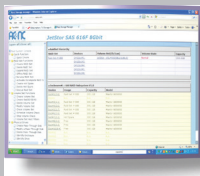
### FEATURES

- Up to 1,600 MB/sec performance through four 1Gb/sec Ethernet host connections to support your most demanding applications.
- RAID Manager browser based GUI management and monitoring software allows you to remotely configure and manage all JetStor systems with e-mail event notification.
- Supports all Operating Systems, both single and clustered.
- Field-replaceable major components allow for maximum convenience, uptime and configuration flexibility.
- Free telephone and email support provided for the life of the system.

### WARRANTY

- Three to five years on disk drives, three years on all other components.
- Optional advanced replacement program ships drive replacements within 24 hours. Optional on-site service also available.

**vmware**  
READY



### RAID MANAGER

Proactively manage, configure and monitor all JetStor RAID systems from any browser.

[www.raid.com](http://www.raid.com)  
[sales@acnc.com](mailto:sales@acnc.com)  
**800.213.2667**



# JetStor®

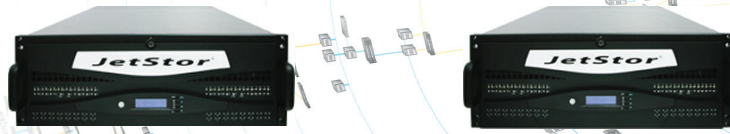
Storage. Solutions. Support.

## SPECIFICATIONS

# JetStor SAS 660iS Series

HIGH PERFORMANCE RAID SYSTEMS

**1,600  
MB/S!**



Model	JetStor SAS 660iS	JetStor SAS 660iSD
Host Ports	Four 1 GigE Ethernet	Four 1 GigE Ethernet per redundant controller
Disk Interface	6Gb/s SAS2 / SATA3	6Gb/s SAS2
Expansion Ports	One, 6Gb/s SAS (SFF-8088)	Two, 6Gb/s SAS (SFF-8088)
Drives (unit / expansion)	60, 3.5"/Up to 120	60, 3.5"
Processor type	***** Intel IOP342 64-bit Chevelon dual core storage processor *****	
Cache memory	***** 2GB(default)-4GB(optional)/DDR2-800 ECC REG SDRAM *****	
Battery backup	Optional	Optional
Management / Monitor port support	One, RJ45 Ethernet	Two, RJ45 Ethernet
SMTP manager and SNMP agent	Yes	Yes
<b>Enclosure</b>		
Tray lock	Yes	Yes
Disk status indicators	Access / Fail LED	Access / Fail LED
Single Backplane	***** SAS2 / SATA3 Cableless *****	
PS/Fan modules	Three, 700W w/PFC	Three, 700W w/PFC
Turbo Fans	Eleven	Eleven
Power	**** AC 90V ~ 264V Full Range, 12A ~ 6A, 47Hz ~ 63Hz (each module) *****	
<b>Environmental</b>		
Relative Humidity	***** 5% - 90% Non-condensing *****	
Operating Temperature	***** 50°F - 104°F (10°C ~ 40°C) *****	
Physical Dimensions (W x D x H)	***** 19" wide, 33" deep, 7" (4U) high *****	
Weight (Without drives)	99 lb. / 45 kg.	99 lb. / 45 kg.
<b>Compatibility</b>		
Operating Systems	VMWare ESX Server, vSphere, Windows Server 2008, Windows Server 2003, XenServer, Oracle/Solaris, Linux, MAC OS X, and others to be announced	
SAS Drives	3.5": 300GB, 450GB, 600GB, 1TB, 2TB and 3TB	
SATA Drives	3.5": 500GB (7,200 rpm), 1TB (7,200 rpm) and 2TB (7,200 rpm)	

## RAID FEATURES

- RAID Levels 0, 1,10(1E), 3, 5, 6, 30, 50, 60, JBOD
- Up to 128 Array groups
- Up to 128 LUNs
- Global & dedicated hot spares
- Simultaneous online expansion and RAID migration
- Drive roaming
- Online rebuild
- Variable stripe size
- E-mail notification
- Online capacity expansion
- Online volume set expansion
- RAID level/stripe size migration
- Online array roaming
- Online consistency check
- Instant availability and background initialization
- S.M.A.R.T. support
- MAID 2.0
- Bad block auto-remapping

## MANUFACTURER



[www.raid.com](http://www.raid.com)  
[sales@acnc.com](mailto:sales@acnc.com)  
**800.213.2667**

### Advanced Computer & Network Corporation

5001 Baum Boulevard, Suite 680  
 Pittsburgh, PA 15213  
 Phone: 412.683.9010  
 Fax: 412.683.9070  
 Support: 888.686.2262  
 Europe: +44 (0)1628 891616  
 GSA Schedule: GS-35F-0694J  
 CMAS: 3-00-70-1230A

## SYSTEM FEATURES

- Menu driven front LCD display
- Innovative modular architecture
- Redundant flash image for high availability
- Multiple array enclosures per host connection
- Volume sets greater than 2TB (64-bit LBA support)
- Disk drives greater than 2TB
- Supports Windows 4KB/sector, up to 16TB per volume set
- Disk scrubbing / array verification scheduling for automatic repair of all RAID sets
- Records logins in the event log with IP address and service (http, telnet and serial)
- Supports intelligent power management to save energy and extend service life
- NTP protocol RAID controller clock synchronization
- Background initialization for instant availability
- Supports S.M.A.R.T, NCQ and OOB staggered spin-up capable drives
- Local audible event notification alarm
- Real time clock support